

< M E M O >

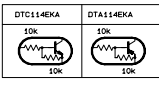
Standard schematic diagrams

Receiver & System control section

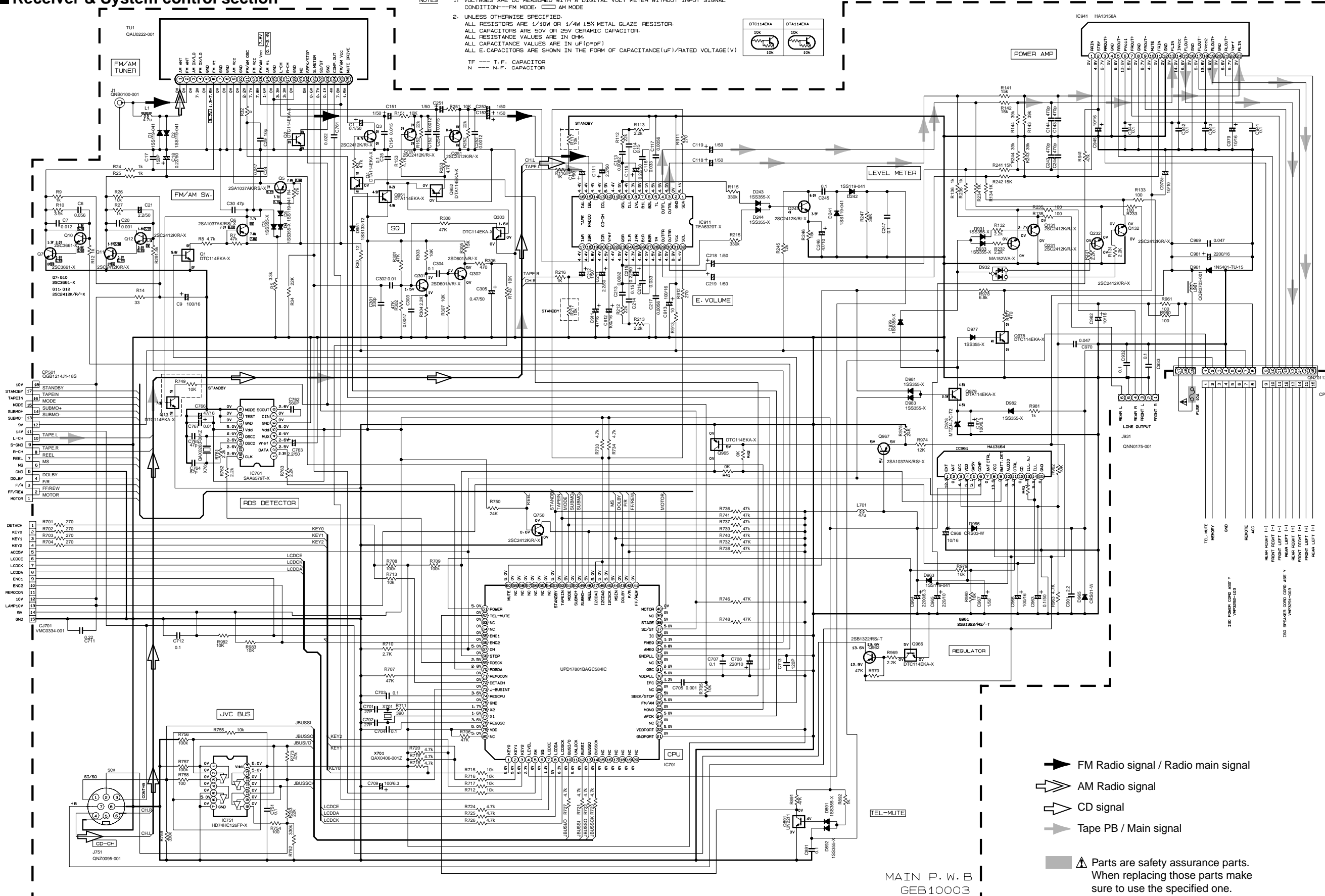
NOTES

- VOLTAGES ARE DC-MEASURED WITH A DIGITAL VOLT METER WITHOUT INPUT SIGNAL CONDITION—FM MODE. AM MODE
- UNLESS OTHERWISE SPECIFIED, ALL RESISTORS ARE 1/10W OR 1/4W ±5% METAL GLAZE RESISTOR. ALL CAPACITORS ARE 50V OR 25V CERAMIC CAPACITOR. ALL RESISTANCE VALUES ARE IN OHM. ALL CAPACITANCE VALUES ARE IN μF (μ=PF) ALL E-CAPACITORS ARE SHOWN IN THE FORM OF CAPACITANCE(μF)/RATED VOLTAGE (V)

TF --- T. F. CAPACITOR
N --- N. F. CAPACITOR



5
4
3
2
1



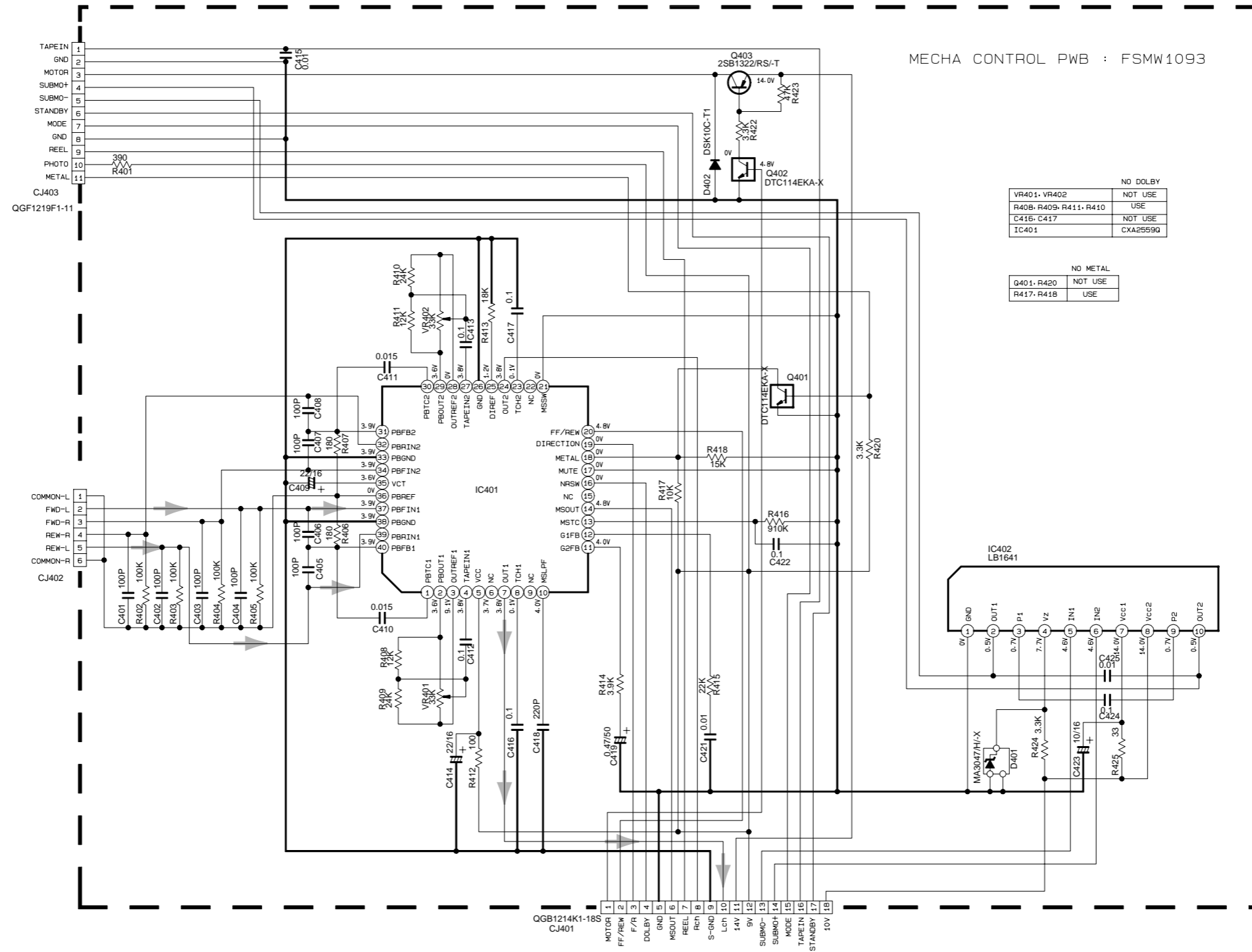
- FM Radio signal / Radio main signal
- AM Radio signal
- CD signal
- Tape PB / Main signal

Parts are safety assurance parts. When replacing those parts make sure to use the specified one.

MAIN P. W. B
GEB10003

Note:KS-FX722R series. FSDH3170-005BW 1/3
/tr/sjes/3170ma.001

■ Mecha control circuit section



MECHA CONTROL PWB : FSMW1093

NO DOLBY	
VR401, VR402	NOT USE
R408, R409, R411, R410	USE
C416, C417	NOT USE
IC401	CXA2559G

NO METAL	
G401, R420	NOT USE
R417, R418	USE

➔ Tape PB / Main signal

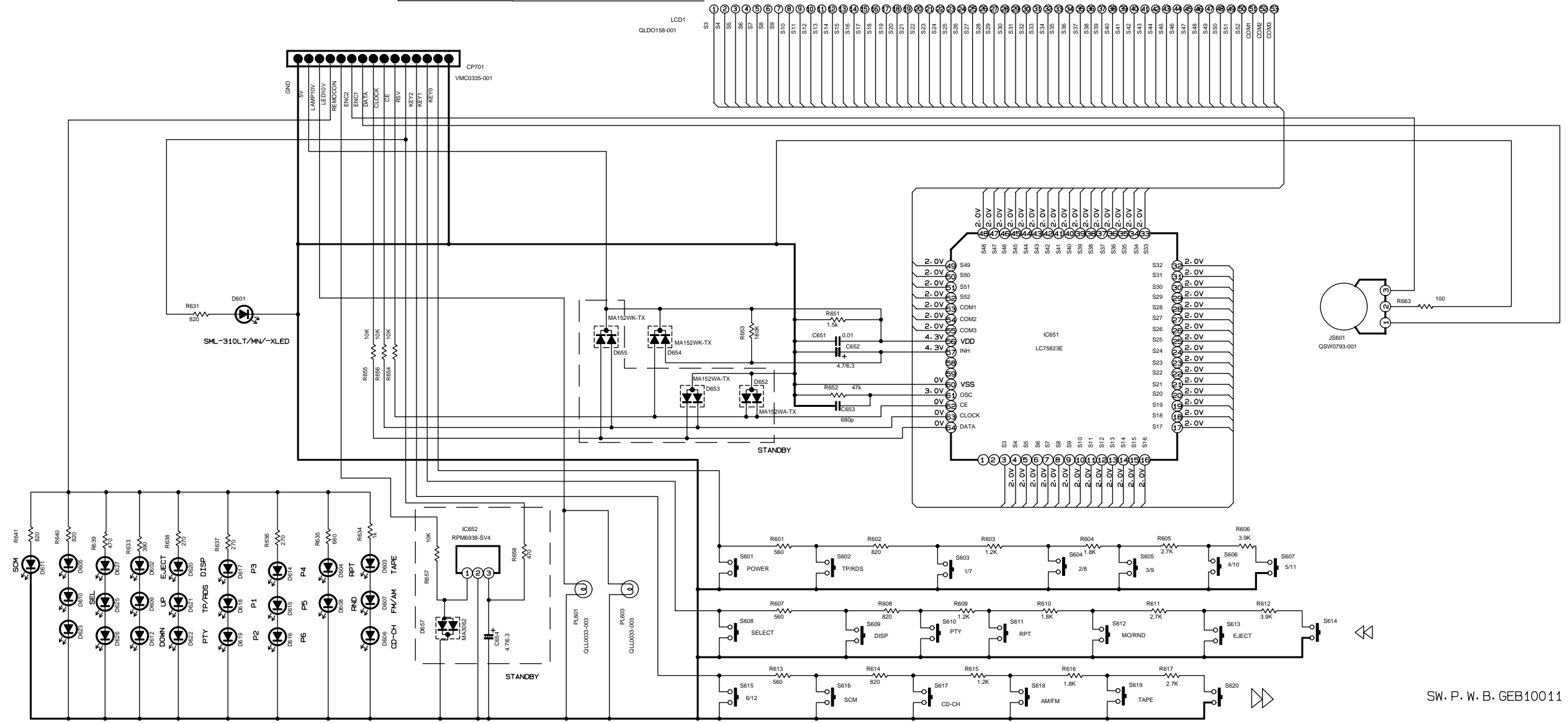
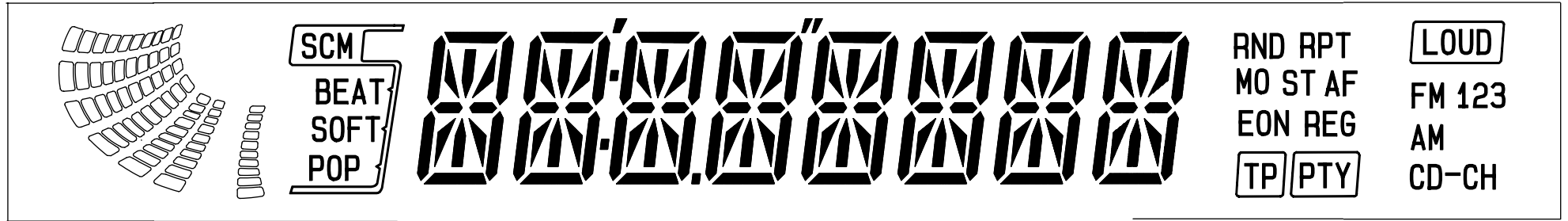
Note:KS-FX722R series FSDH3170-005MW 3/3
/te/s/jes/3170me.001

5
4
3
2
1

■ LCD driver & Operation switch section

- NOTES**
1. VOLTAGES ARE DC-MEASURED WITH A DIGITAL VOLT METER WITHOUT INPUT SIGNAL. CONDITION - - FM MODE
 2. UNLESS OTHERWISE SPECIFIED, ALL RESISTORS ARE 1/4W 5% CARBON RESISTOR OR 1/4W 1/10W 5% METAL GLAZE RESISTOR. ALL CAPACITORS ARE 50V CERAMIC CAPACITOR. ALL RESISTANCE VALUES ARE IN OHM(Ω). ALL CAPACITANCE VALUES ARE IN μF(μF). ALL E-CAPACITORS ARE SHOWN IN THE FORM OF CAPACITANCE(μF) / RATED VOLTAGE(V).

5
4
3
2
1



D602-D627 SML-310VT/JK/-XLED
EXCEPT: D611 LNJ308681/1-3/X

MODEL NAME	SWITCH BOARD
KS-FX722R SERIES	KS-SWPCB-2

SW.P.W.B. GEB10011

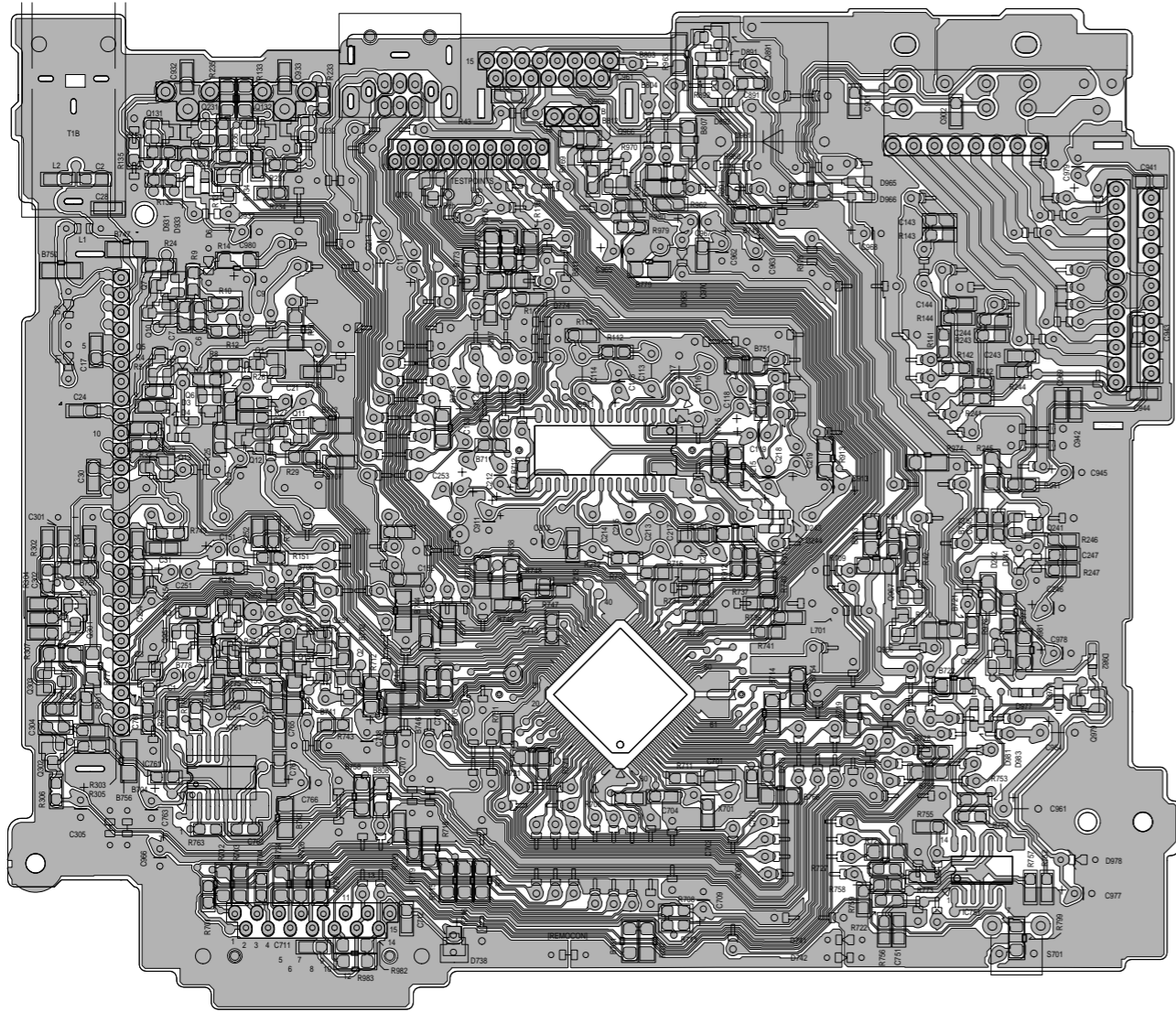
Note:KS-FX722R series FSDH3170-005SW 2/3
/tr/s/es/3170sw.001

Printed circuit boards

■ Main board

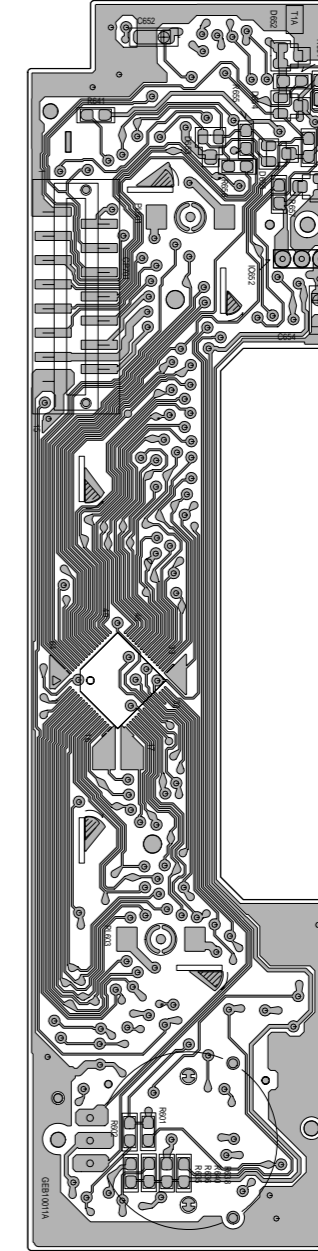
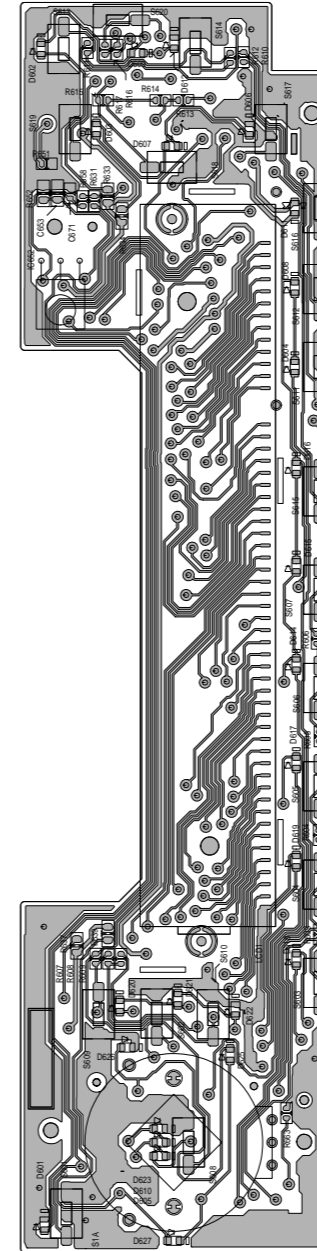
■ Switch board

5
4
3
2
1



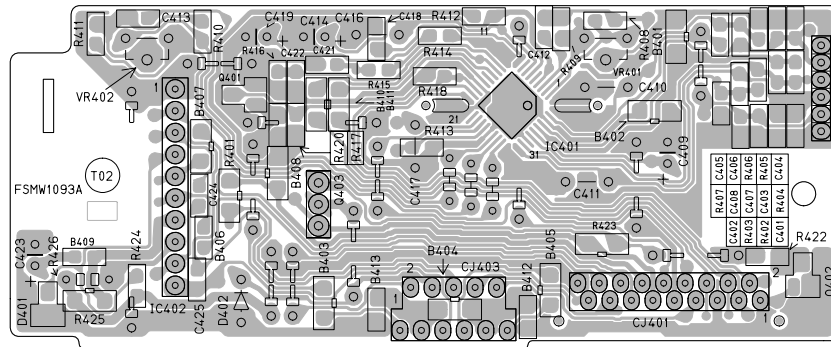
(Foward side)

(Reverse side)

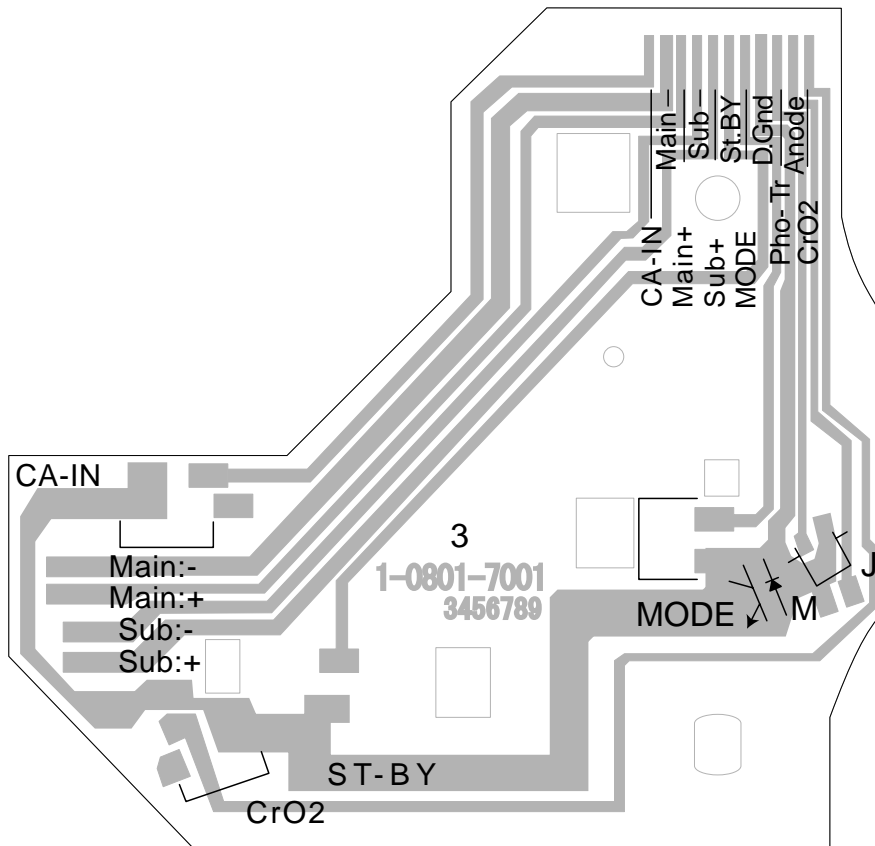


A | B | C | 2-6 | D | E | F | G | H

■ Meca control board



■ Reel board



5

4

3

2

1

A

B

C